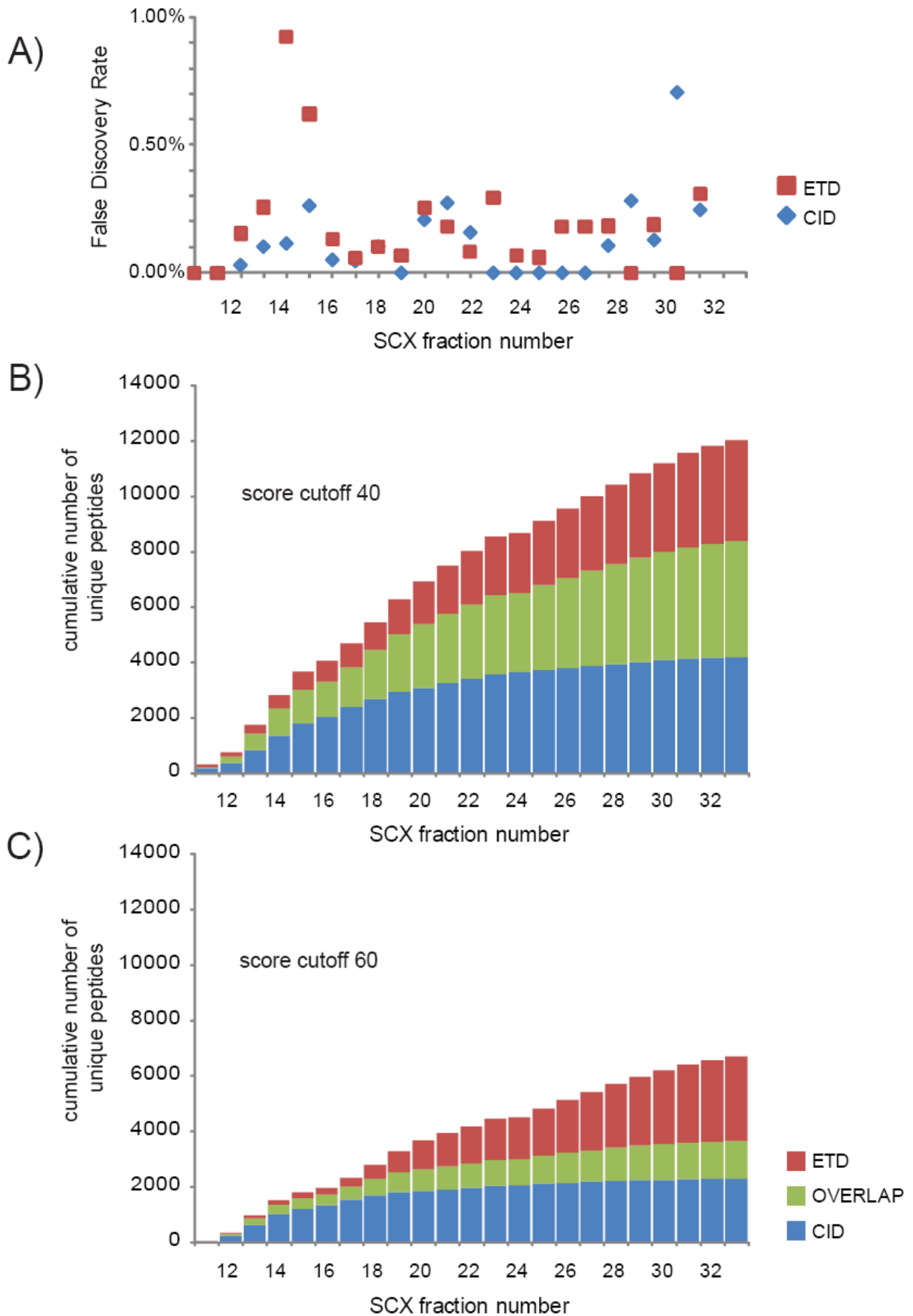
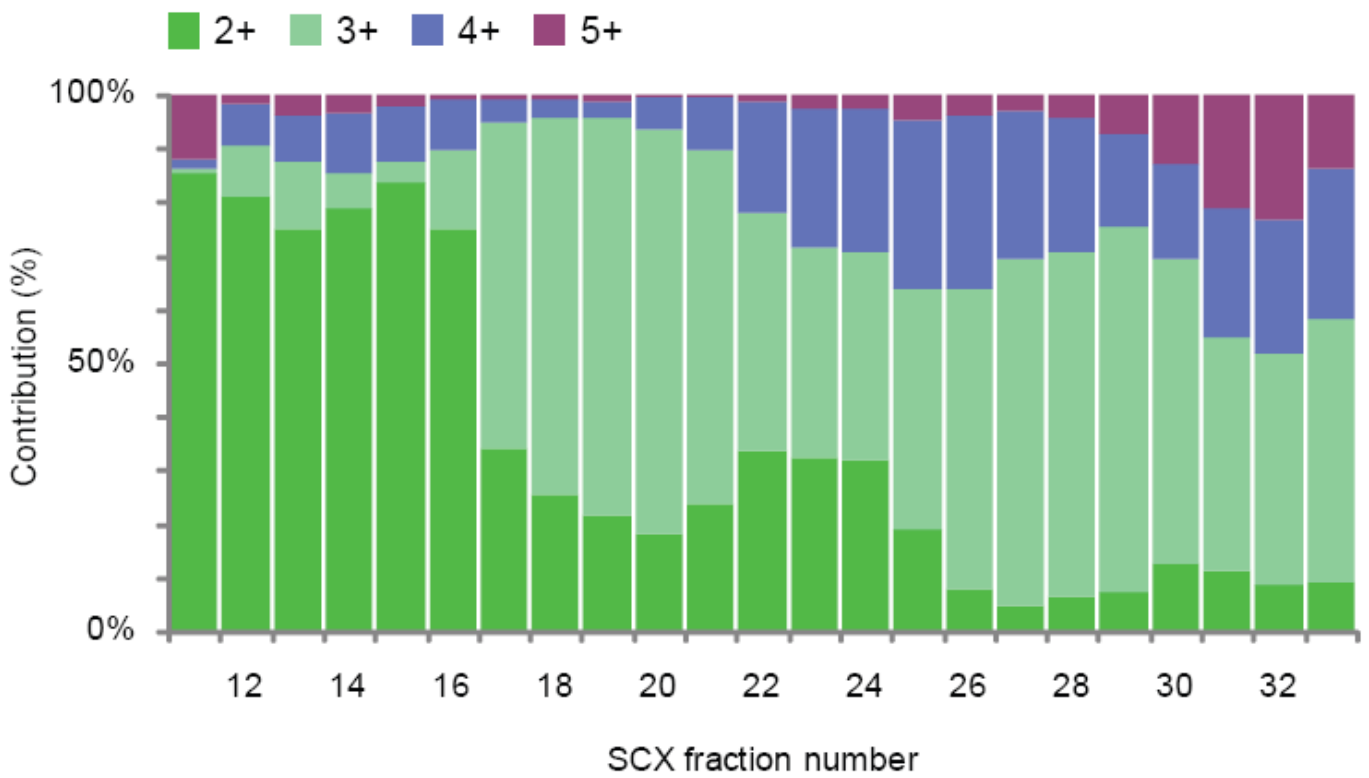


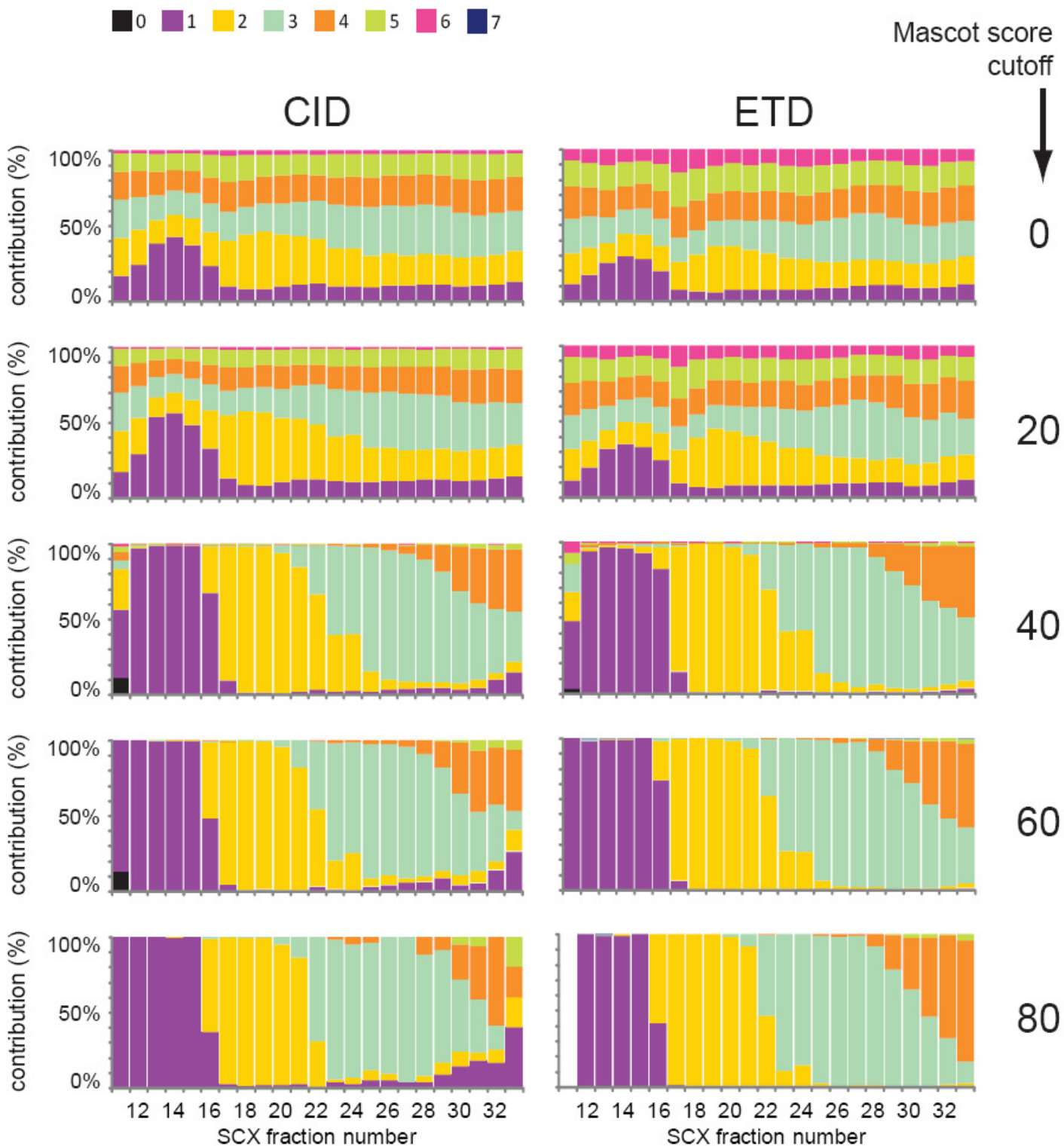
Supplementary Data



Supplementary Figure 1: (A) False discovery rates (FDR) as determined by a decoy database search, for every SCX fraction. CID results in blue and ETD in red. (B) Number of unique peptide identifications per SCX fraction. The number of peptides exclusively identified with CID are in blue, the number of peptides exclusively identified with ETD are in red, and the number of peptides identified with both activation methods are in green. Mascot cut-off placed at 40. (C) Same as B but with a cut-off of 60.

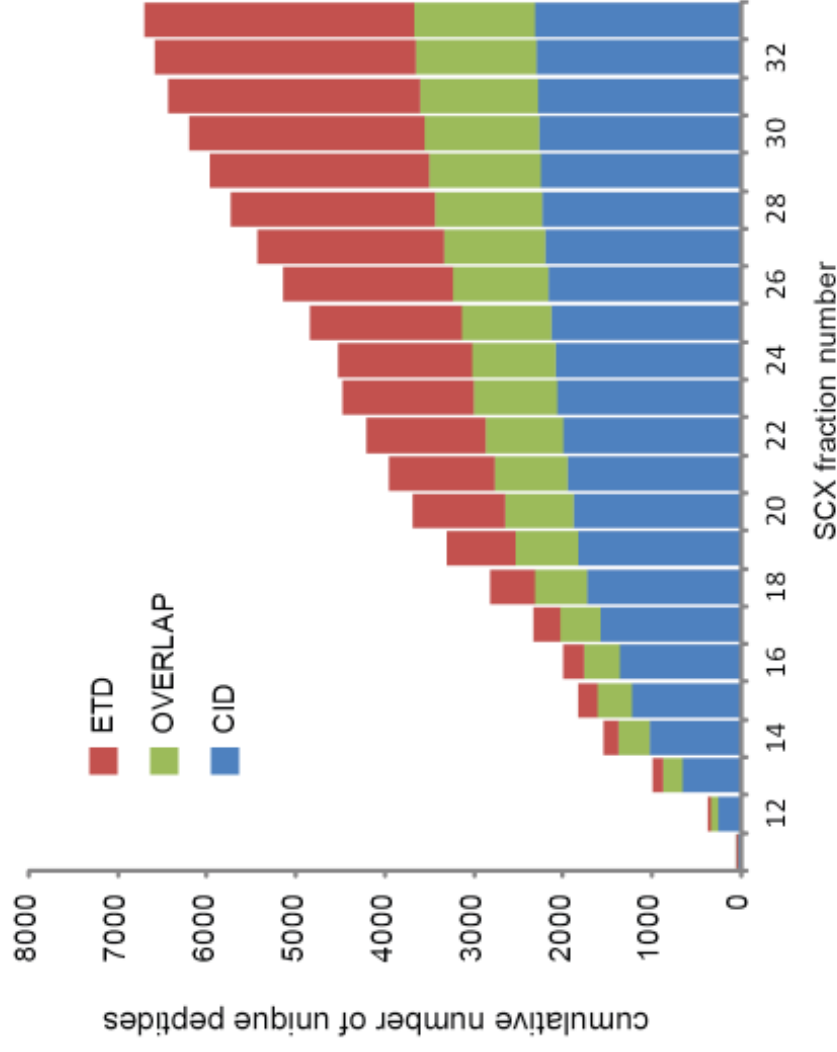


Supplementary Figure 2: Charge state peptide populations for each SCX fraction as determined by the Bioworks 'charger' preprocessor program when the 6+ and 7+ charge states are omitted.



Supplementary Figure 3: Charge state peptide populations for each SCX fraction as determined by utilising Mascot results for both CID and ETD. Each histogram represents the results using a different Mascot cutoff i.e score cut offs of 0, 20, 40, 60 and 80.

fraction	Unique peptides			Cumulative unique peptides		
	CID	ETD	OVERLAP	CID	ETD	OVERLAP
11	47	5	4	47	5	4
12	202	15	90	249	20	94
13	402	92	132	651	112	226
14	380	66	113	1031	178	339
15	199	41	42	1230	219	381
16	132	17	11	1362	236	392
17	208	76	60	1570	312	452
18	150	201	135	1720	513	587
19	112	253	119	1832	766	706
20	47	270	66	1879	1036	772
21	59	164	53	1938	1200	825
22	51	138	50	1989	1338	875
23	68	144	65	2057	1482	940
24	21	32	2	2078	1514	942
25	45	190	77	2123	1704	1019
26	33	200	70	2156	1904	1089
27	43	196	54	2199	2100	1143
28	32	196	58	2231	2296	1201
29	21	181	49	2252	2477	1250
30	16	171	44	2268	2648	1294
31	17	173	32	2285	2821	1326
32	18	111	22	2303	2932	1348
33	6	108	13	2309	3040	1361



Supplementary Figure 4: Absolute number of peptide identifications for each individual SCX fraction with a Mascot cutoff score of 60. Adjacent to the table are the same results are represented graphically (also figure 3B).